

P
A
S
S
I
O
N
D
R
I
V
E

Plano ISD

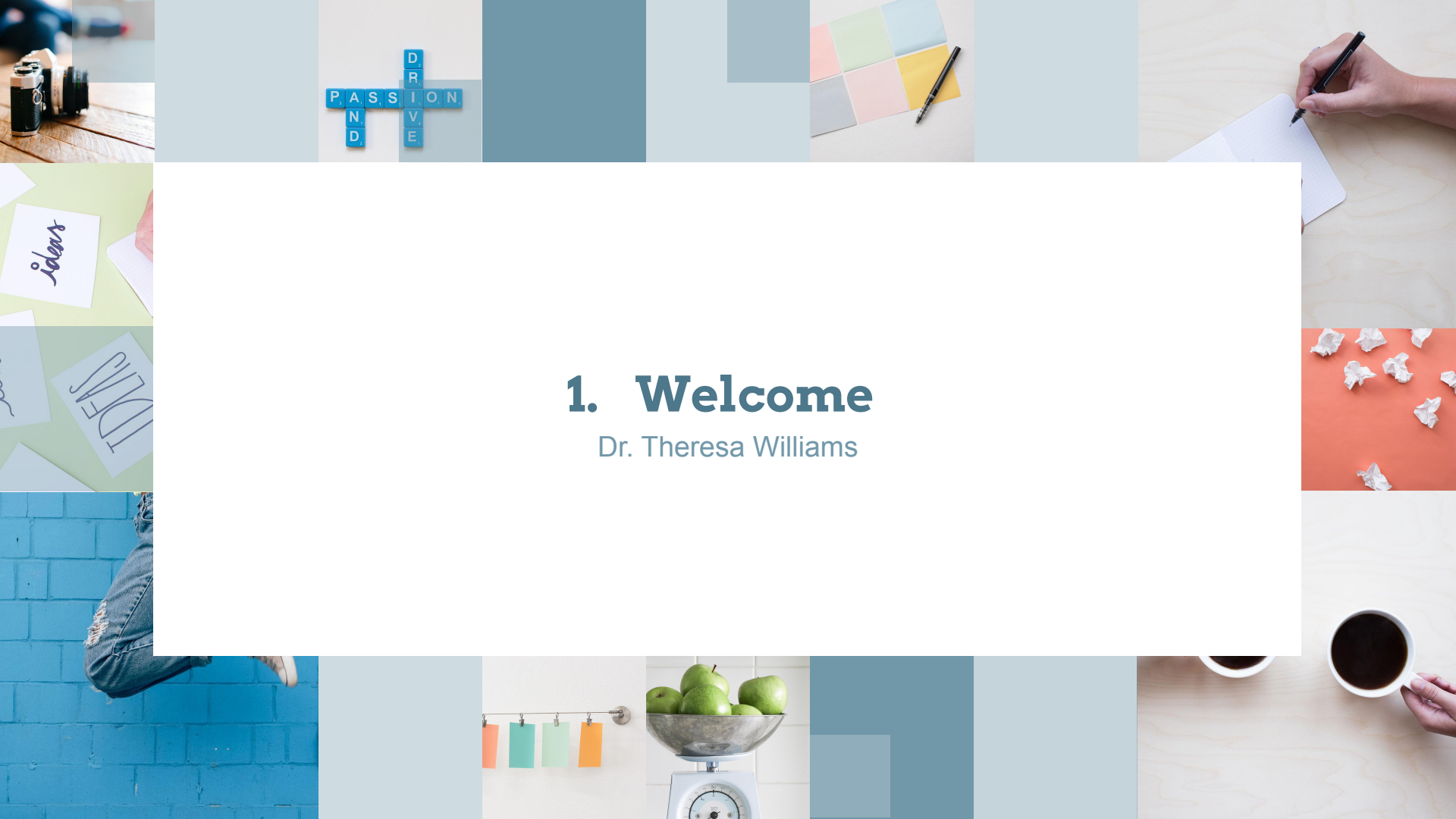
District-Based Improvement Committee

Monday, February 6, 2023

Agenda and Introductions

1. **Welcome - Dr. Theresa Williams, Lisa Wilson**
2. **Staff Development Waiver - Ivan Cantu**
3. **Dropout Prevention Update - Dr. Kristyn Edney**
4. **Mid-Year MAP Data Review**
 - Antoine Spencer
5. **Middle-of-Year District Improvement Plan Formative Review**
 - Laurie Taylor





1. Welcome

Dr. Theresa Williams



2. Professional Development Waiver

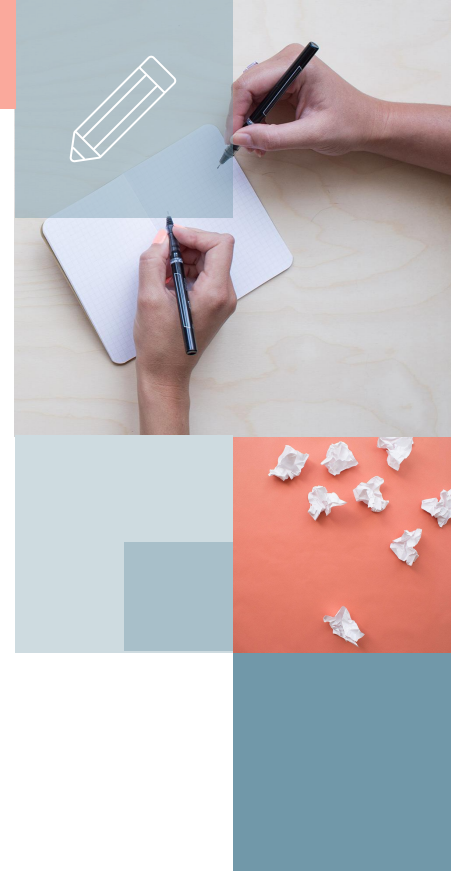
Ivan Cantu

2. Staff Development Waiver

Board Adopted **2023-2024 Academic Calendar**

- 174 Student Days
- 5 Days of PL for Staff Development Waiver
- October 12, 2023
- November 7, 2023
- December 22, 2023 (Trade Day)
- February 19, 2024 (Trade Day)
- February 20, 2024

DBIC Vote





P
A
S
S
I
O
N
D
R
I
O
N
V
E

4. Mid-Year MAP Data Review

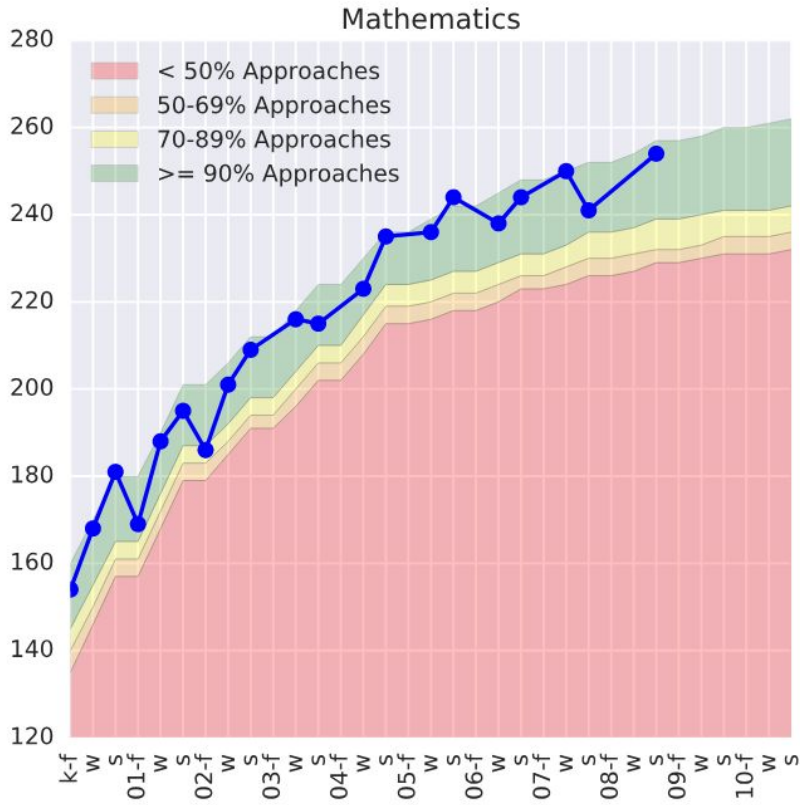
Antoine Spencer

MAP as an Assessment Tool

STAAR Projection

Beginning of Year	Middle of Year	End of Year
As a formative tool to understand where students are in the learning progression at the beginning of the year - to guide planning, instruction, and interventions	As a formative tool to understand where students are in the learning progression during the year - to make adjustments for improvement in student growth	As a formative tool - to predict student performance on high stakes summative assessments (STAAR, ACT, SAT, College & Career Readiness)

MAP Assessment in Plano



Reading and Mathematics

- Kindergarten through Grade 8
- Spanish Reading in K-5

Science

- Grade 3 - Grade 8

Language Usage

- Based on needs of individual students

Winter MAP Assessment - Purpose

Mid-Year Growth

- Compare mid-year growth to prior mid-year points
- Reflect on growth towards end of year expected growth

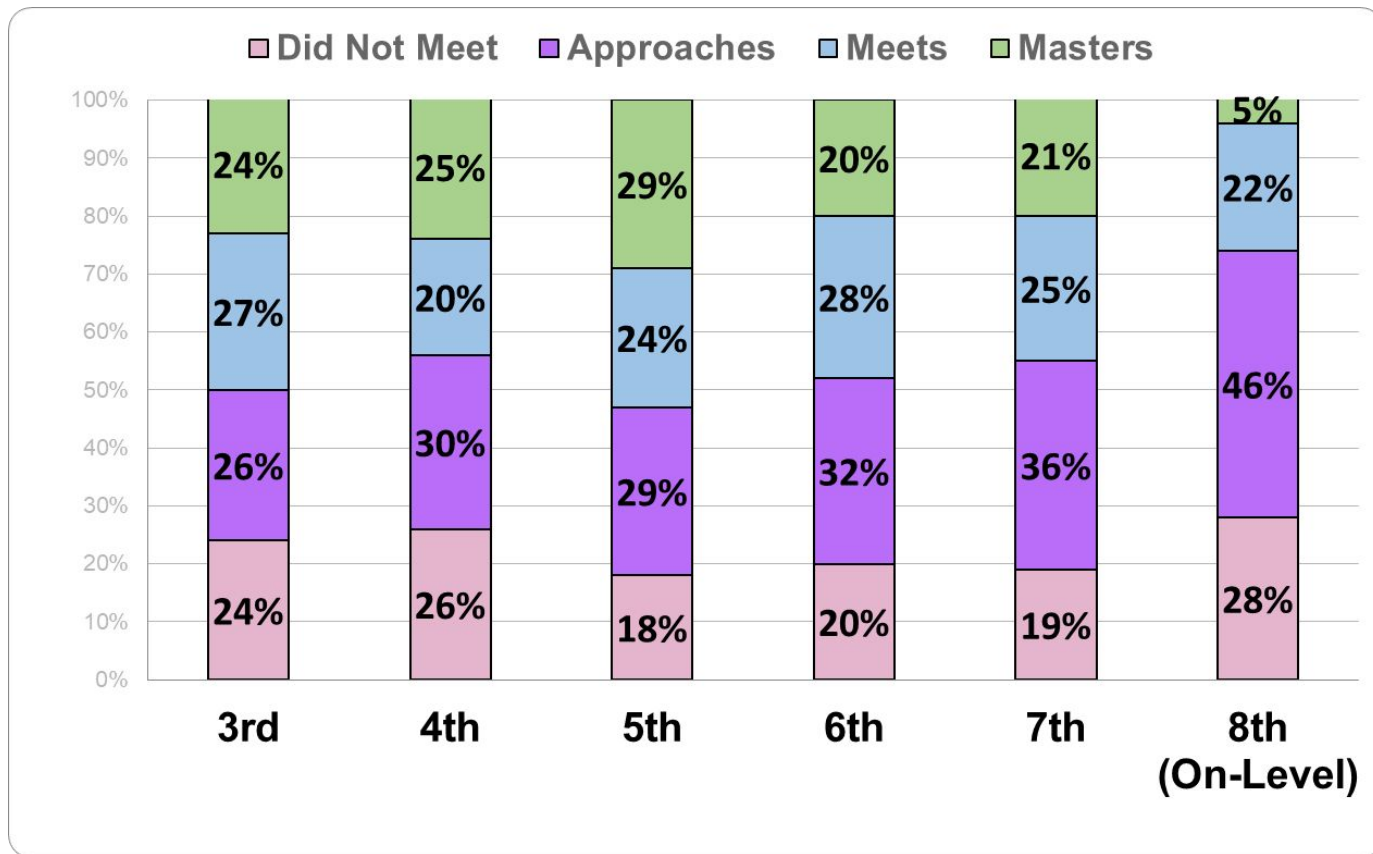
Projection of Performance on STAAR

- Projected performance on STAAR:
Not Met – Approaches – Meets – Masters

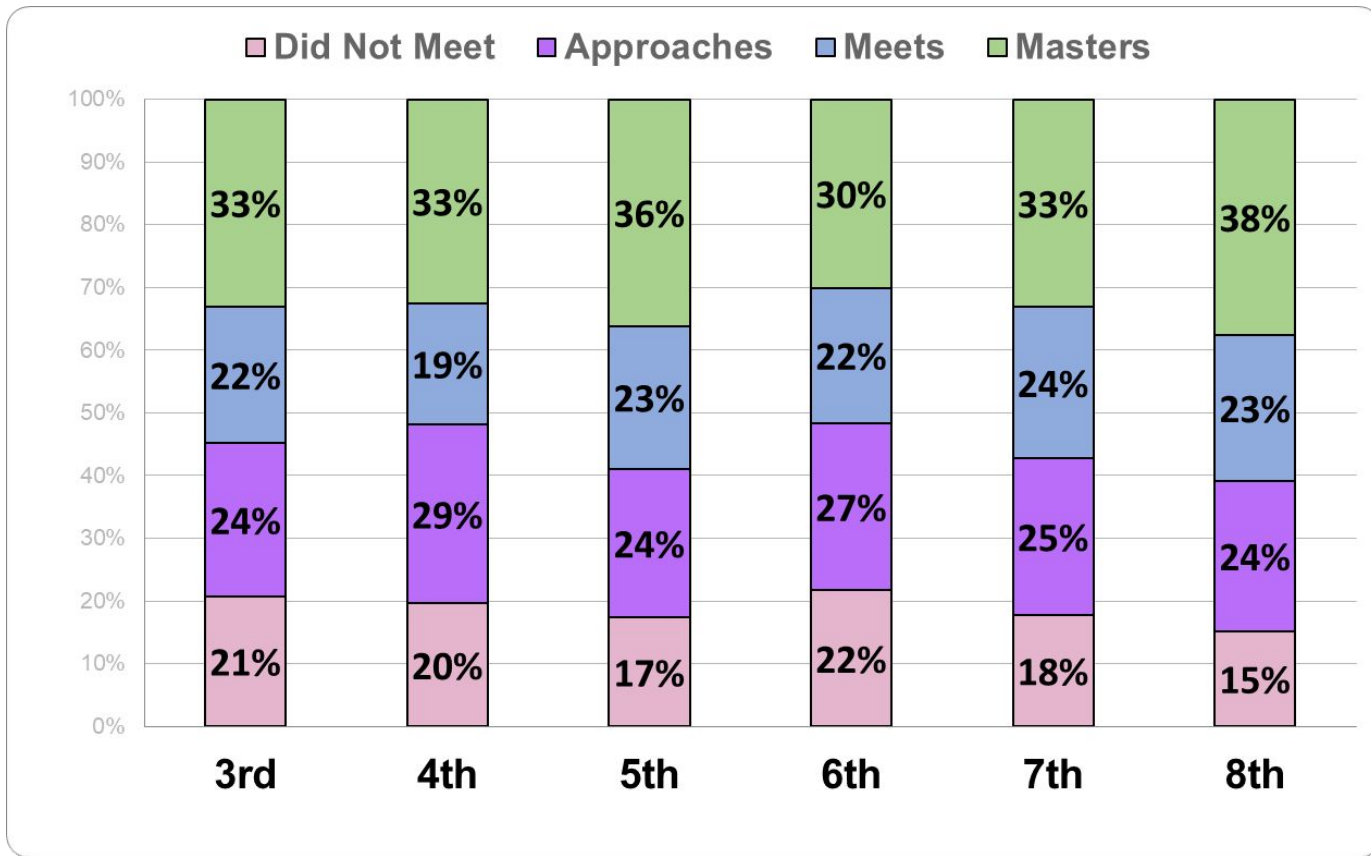


**Lead
collaborative
teams in
discussing how to
support students
to impact all
proficiency levels**

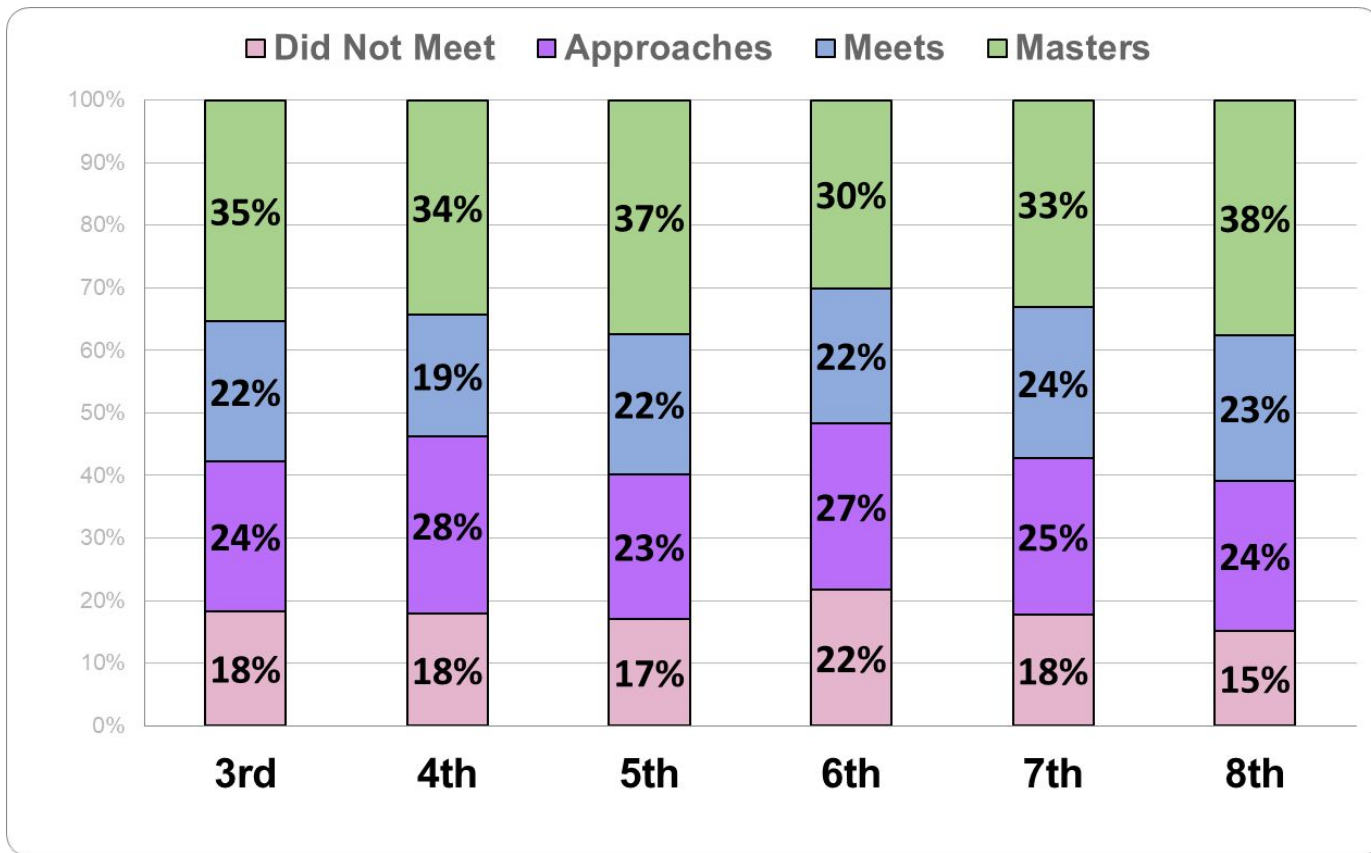
STAAR Projection for 2023 - Mathematics



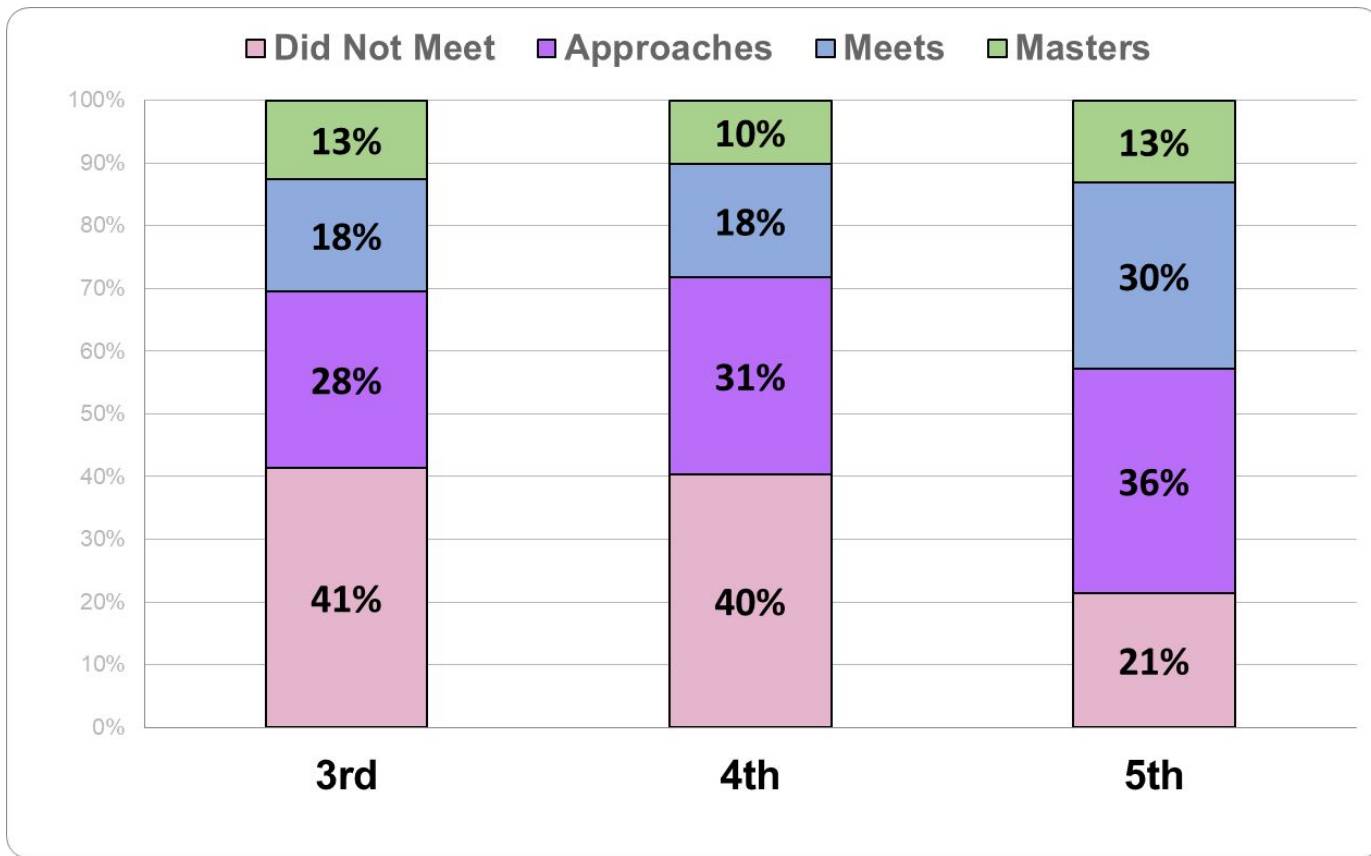
STAAR Projection 2023 - Reading (Eng+Spa)



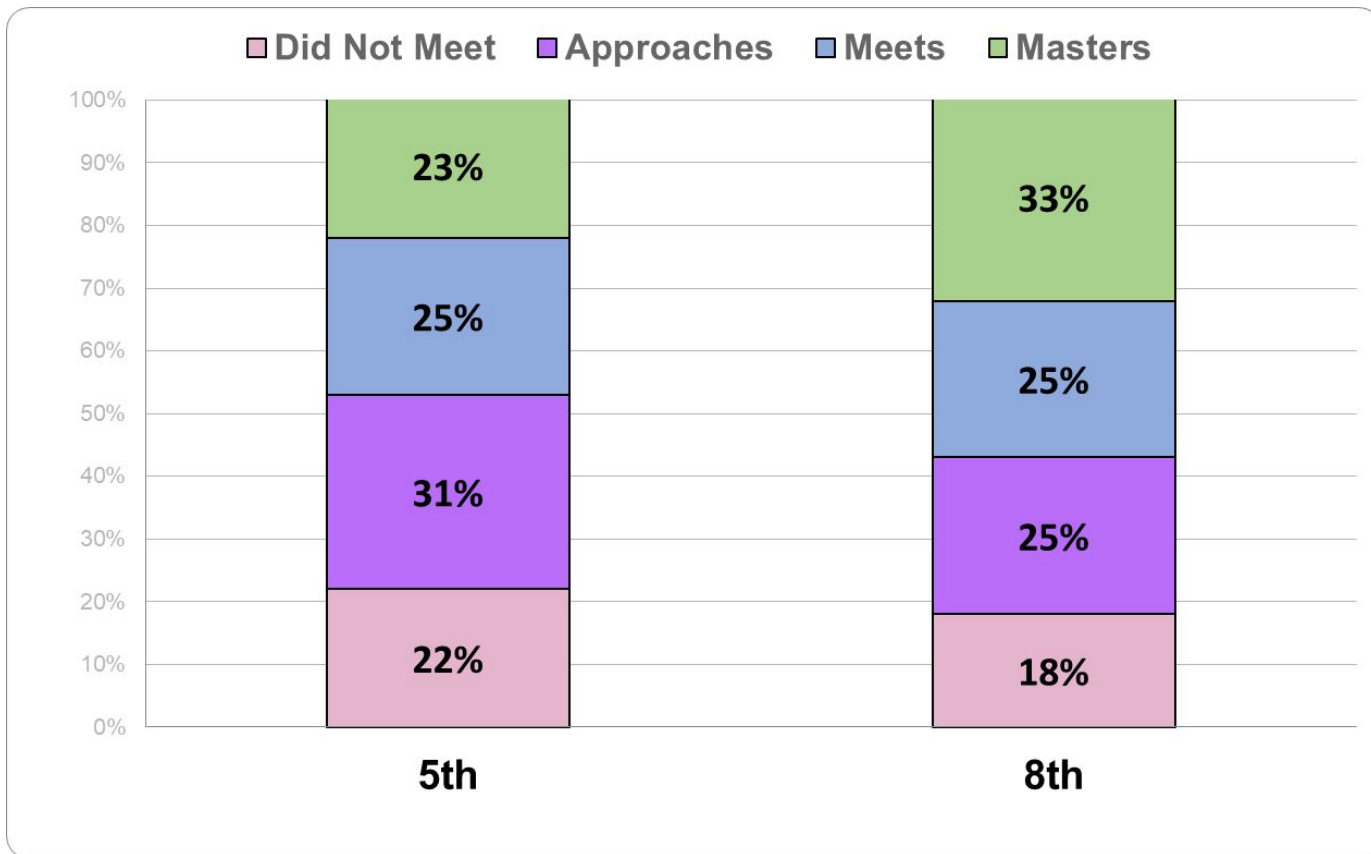
STAAR Projection 2023 - Reading (English)



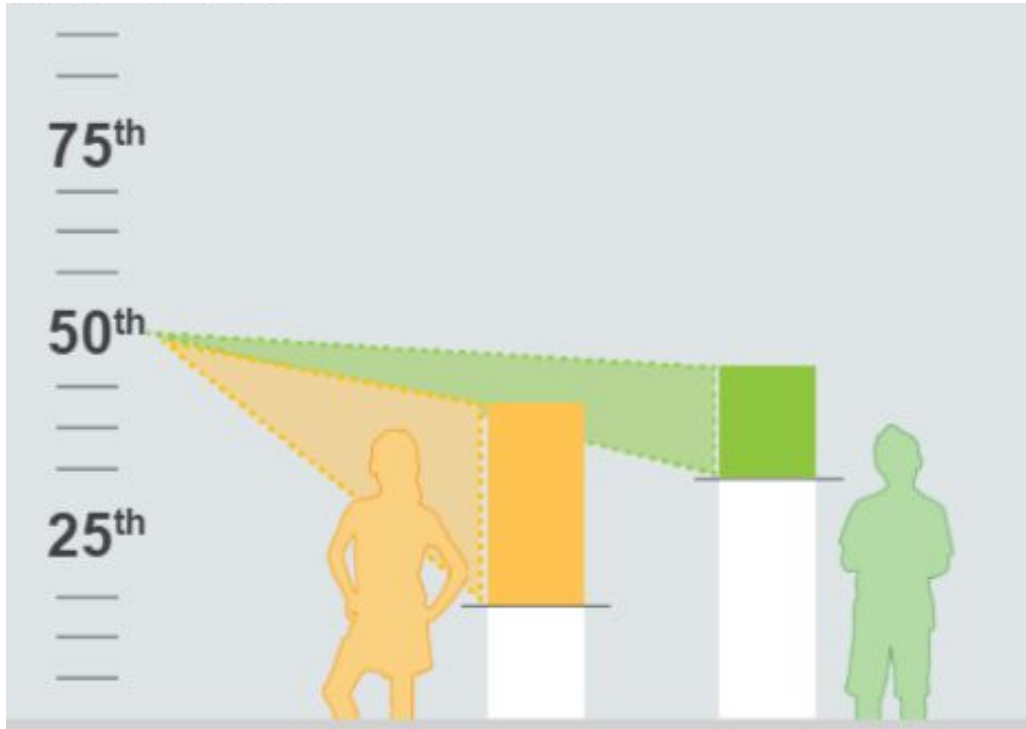
STAAR Projection 2023 - Reading (Spanish)



STAAR Projection 2023 - Science



Growth Percentile

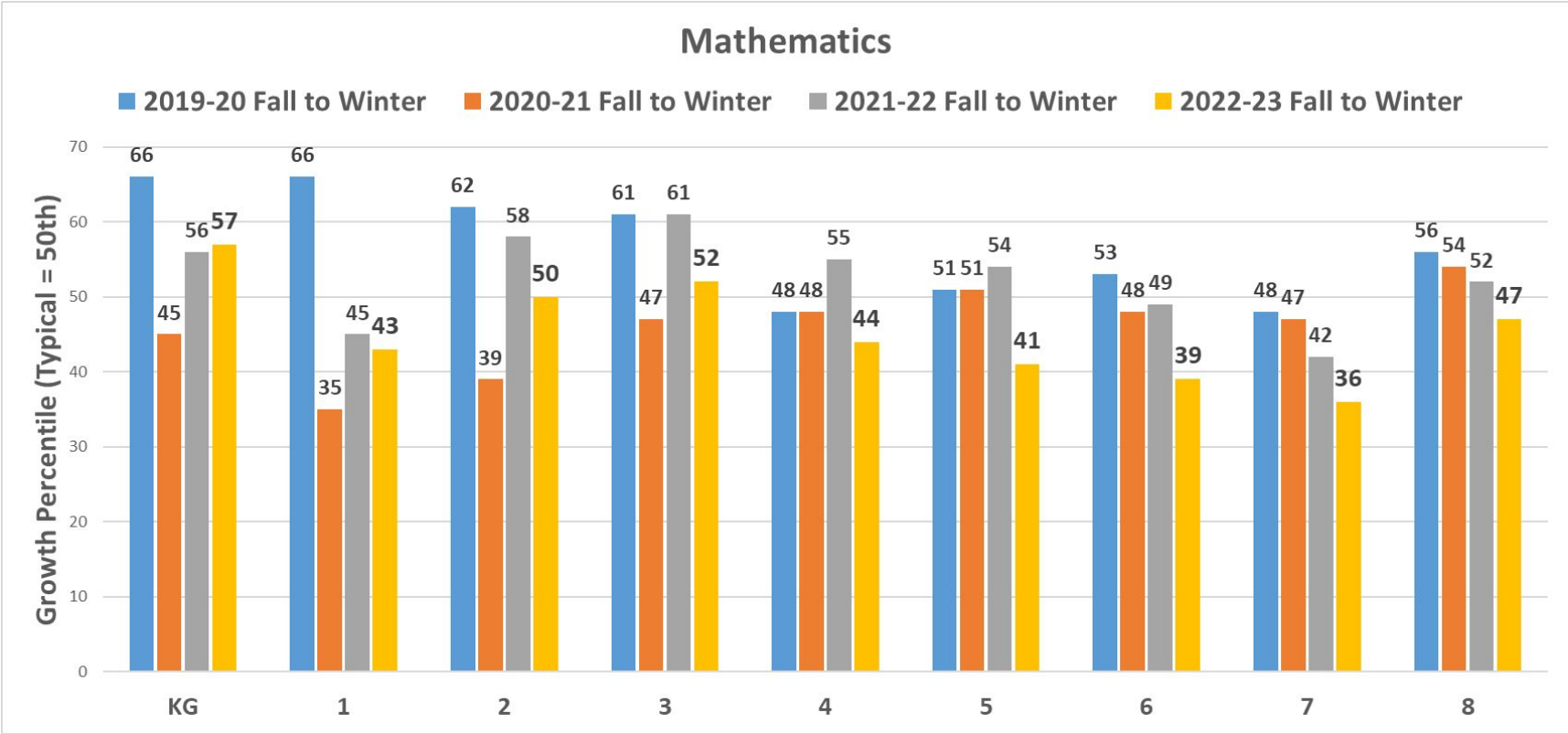


Conditional Growth Percentile shows how well each student grew relative to matching peers in the nation over a period of time.

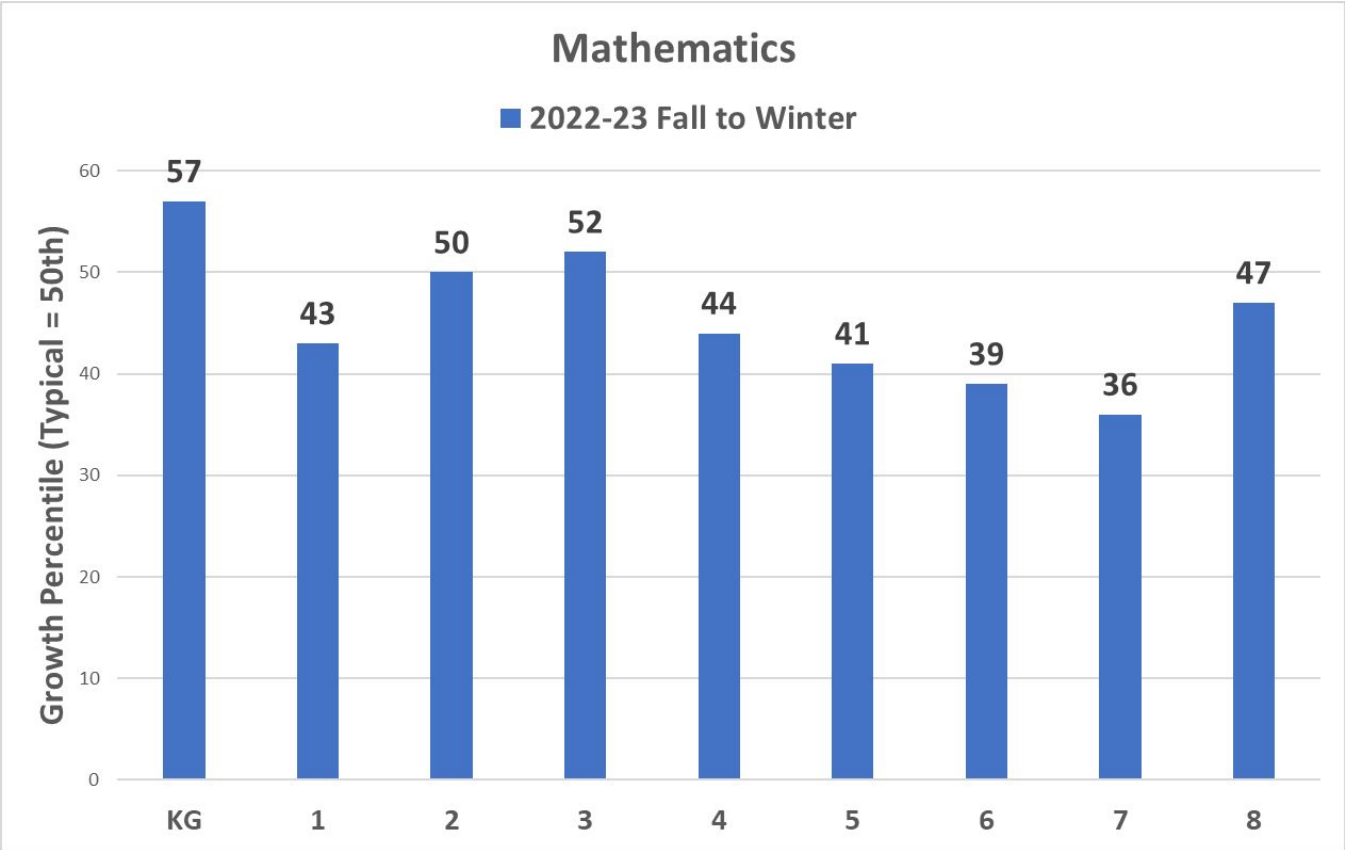
Matching Peers:

- Same Grade
- Same Starting RIT
- Same instruction days between assessments

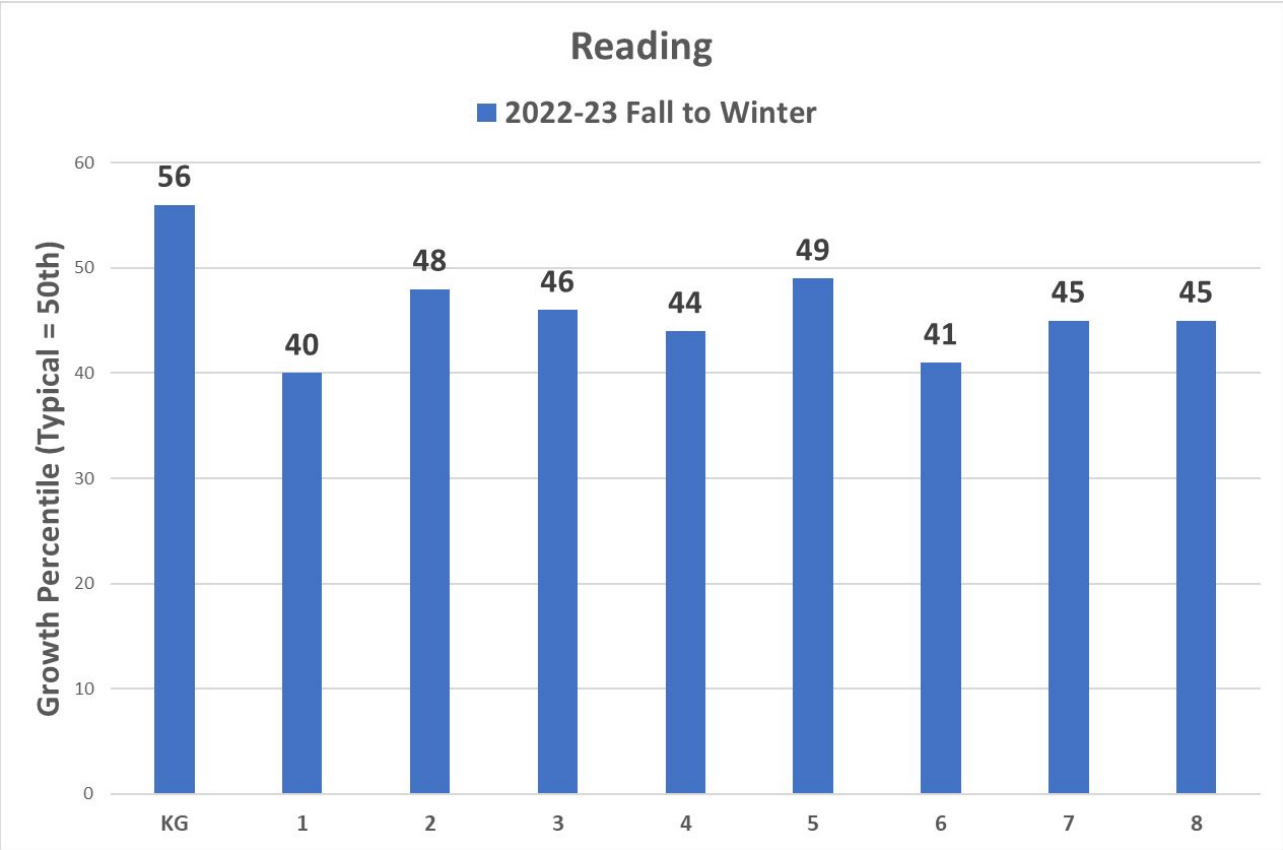
Fall-to-Winter Growth Percentile - Trend



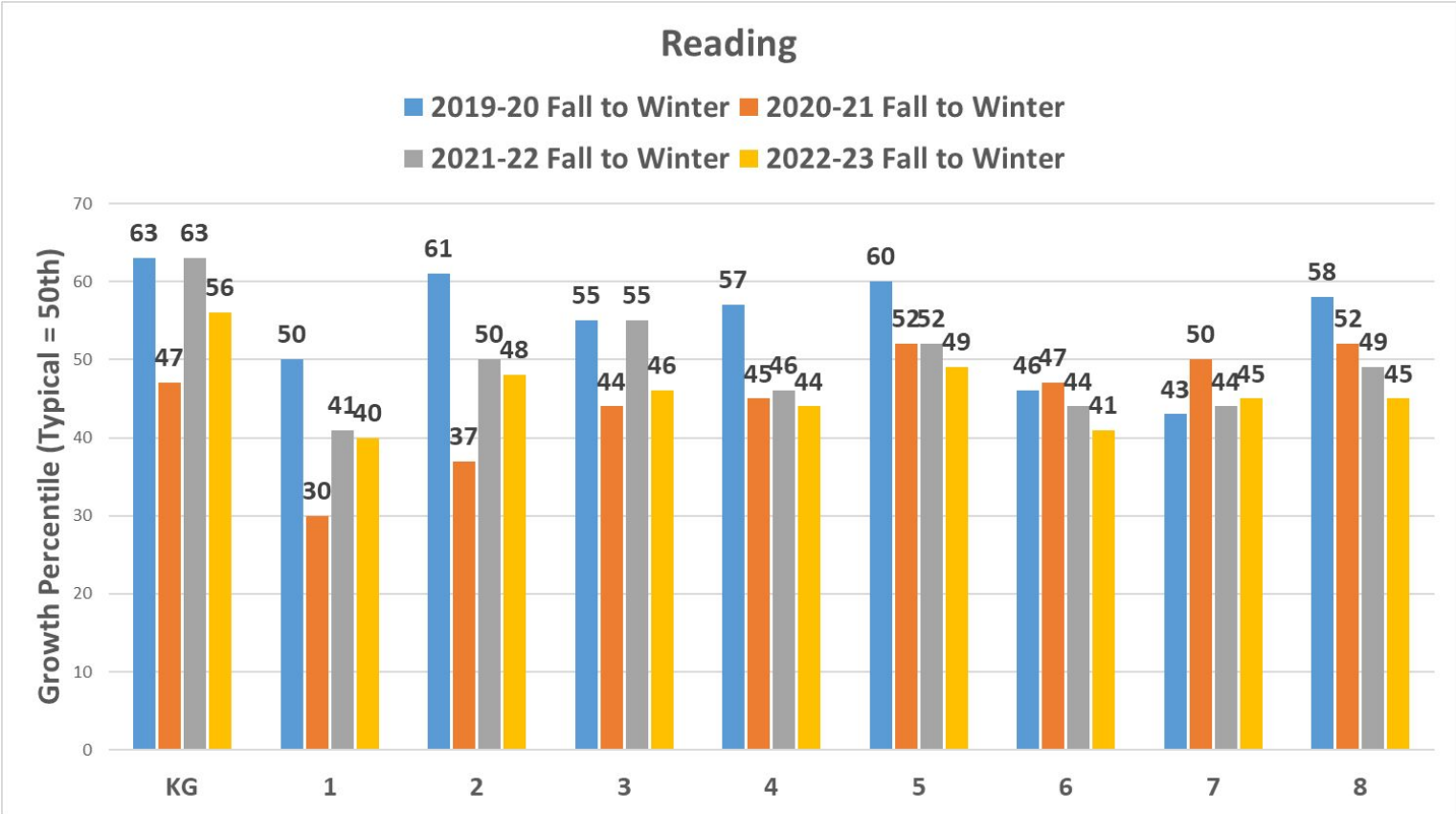
Fall-to-Winter Growth Percentile



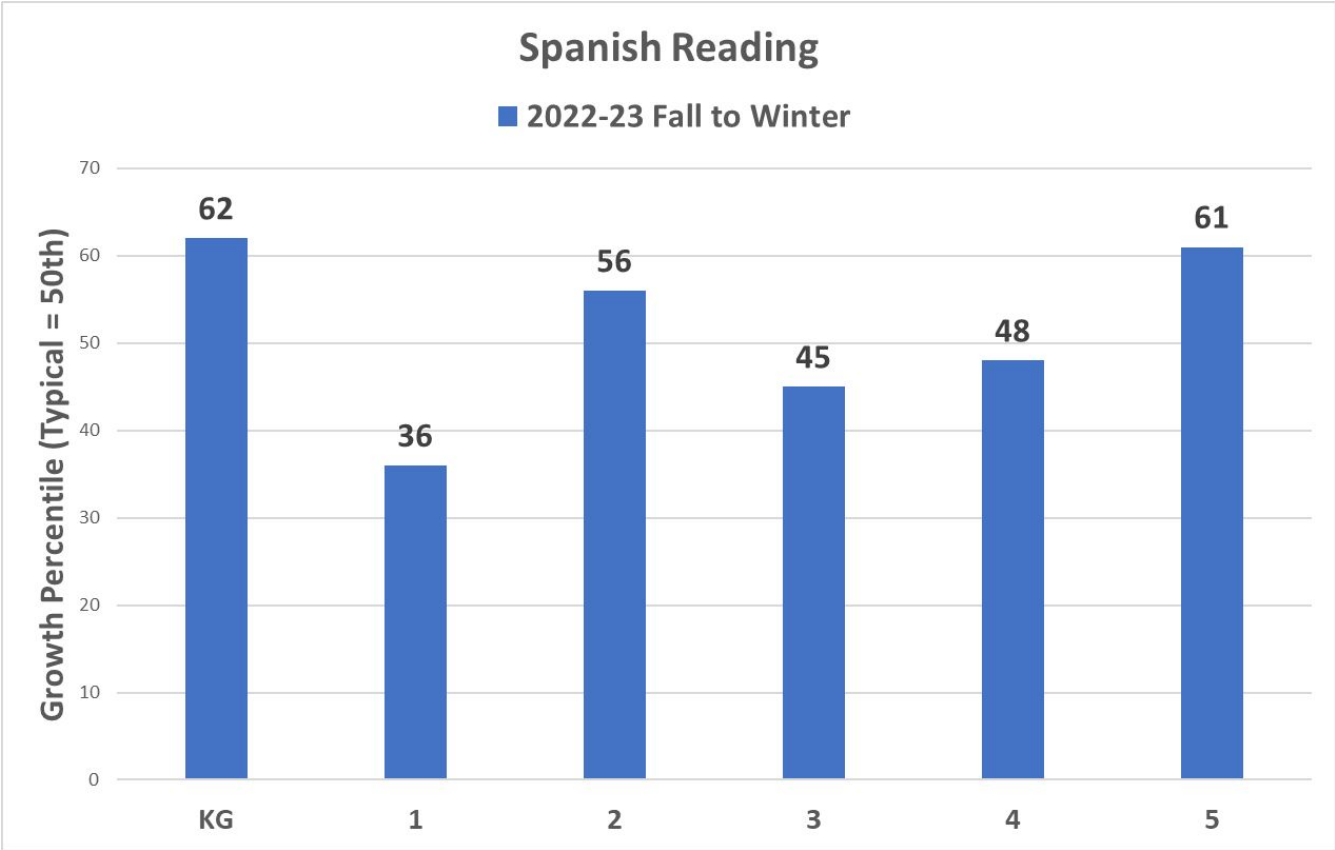
Fall-to-Winter Growth Percentile



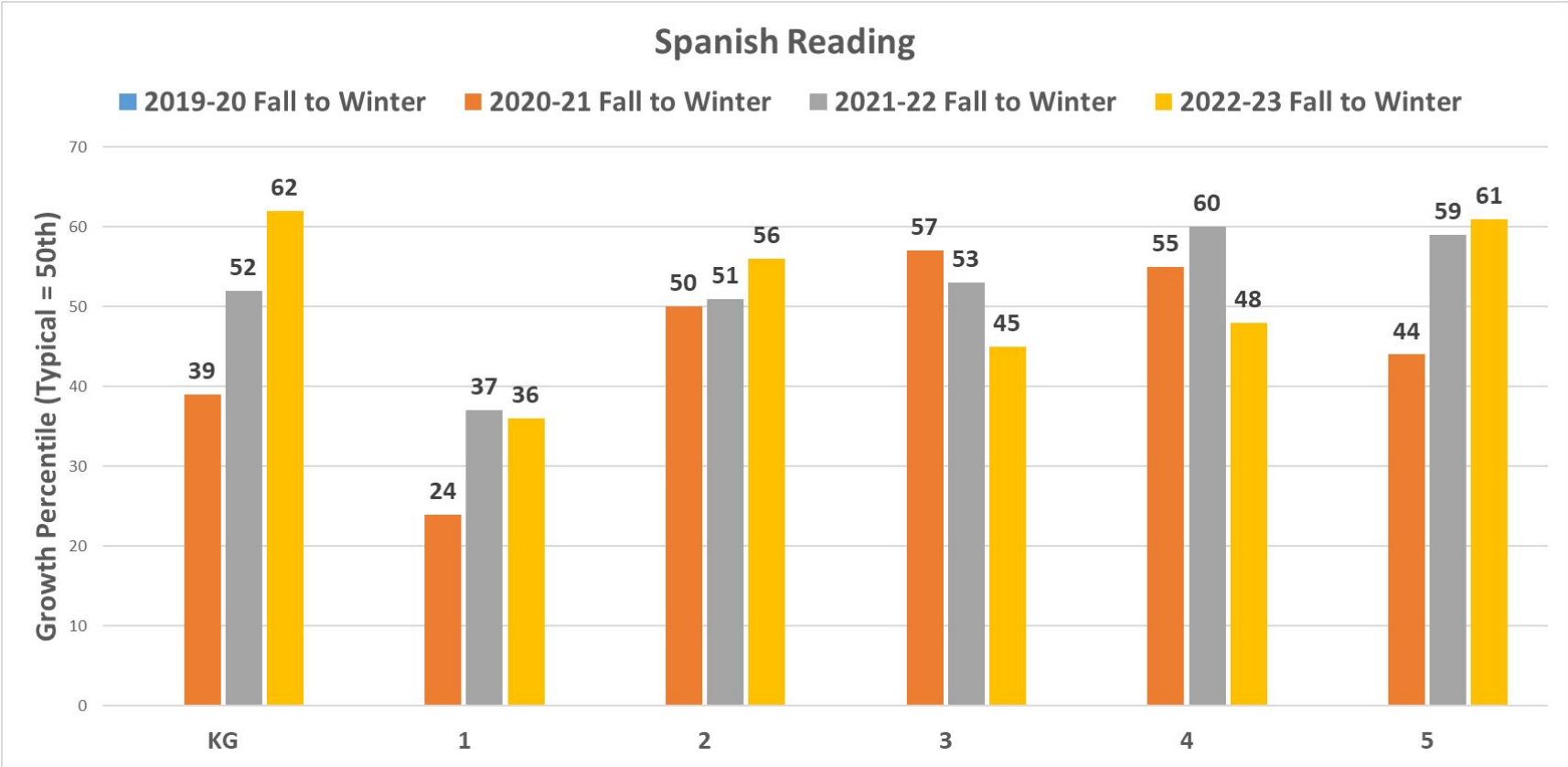
Fall-to-Winter Growth Percentile - Trend



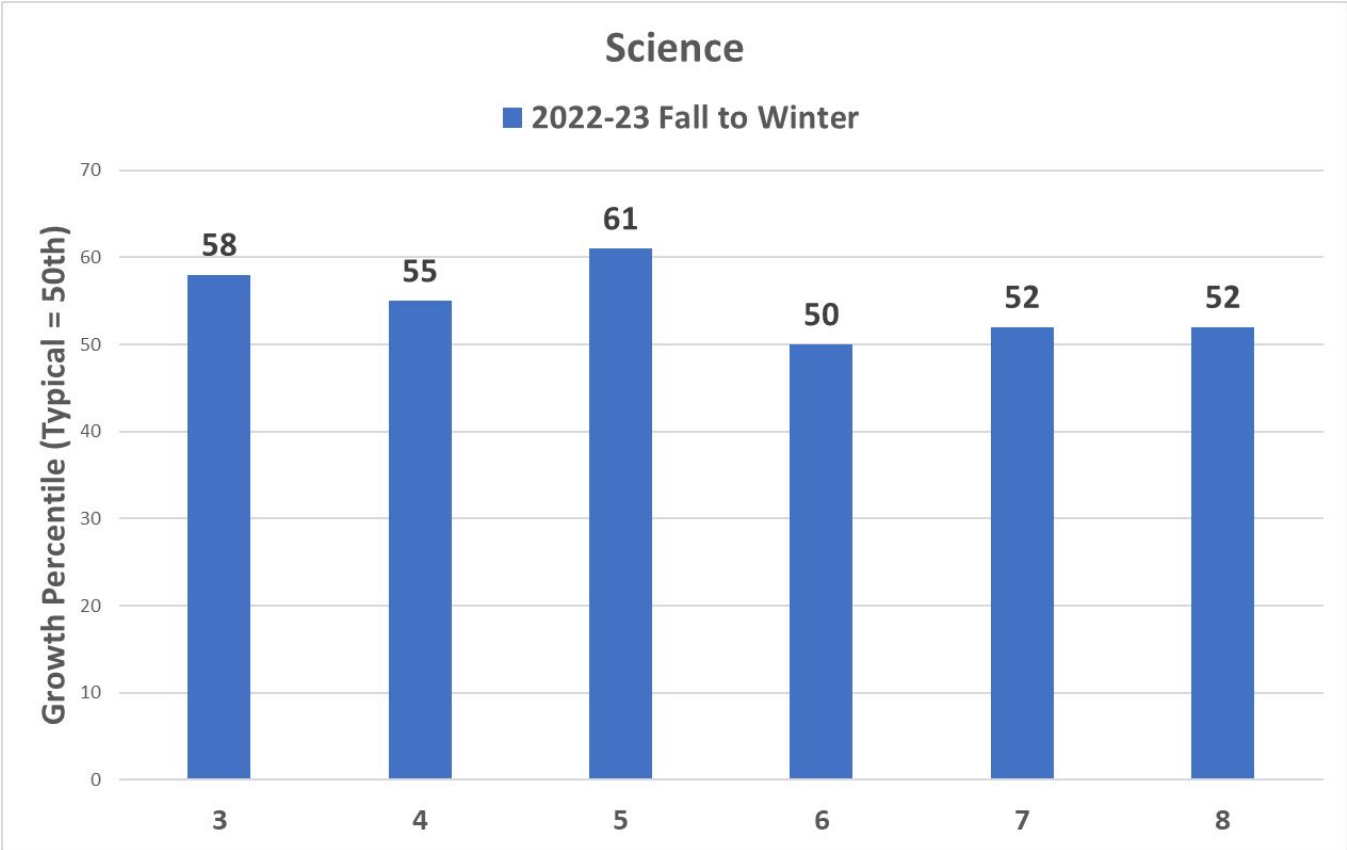
Fall-to-Winter Growth Percentile



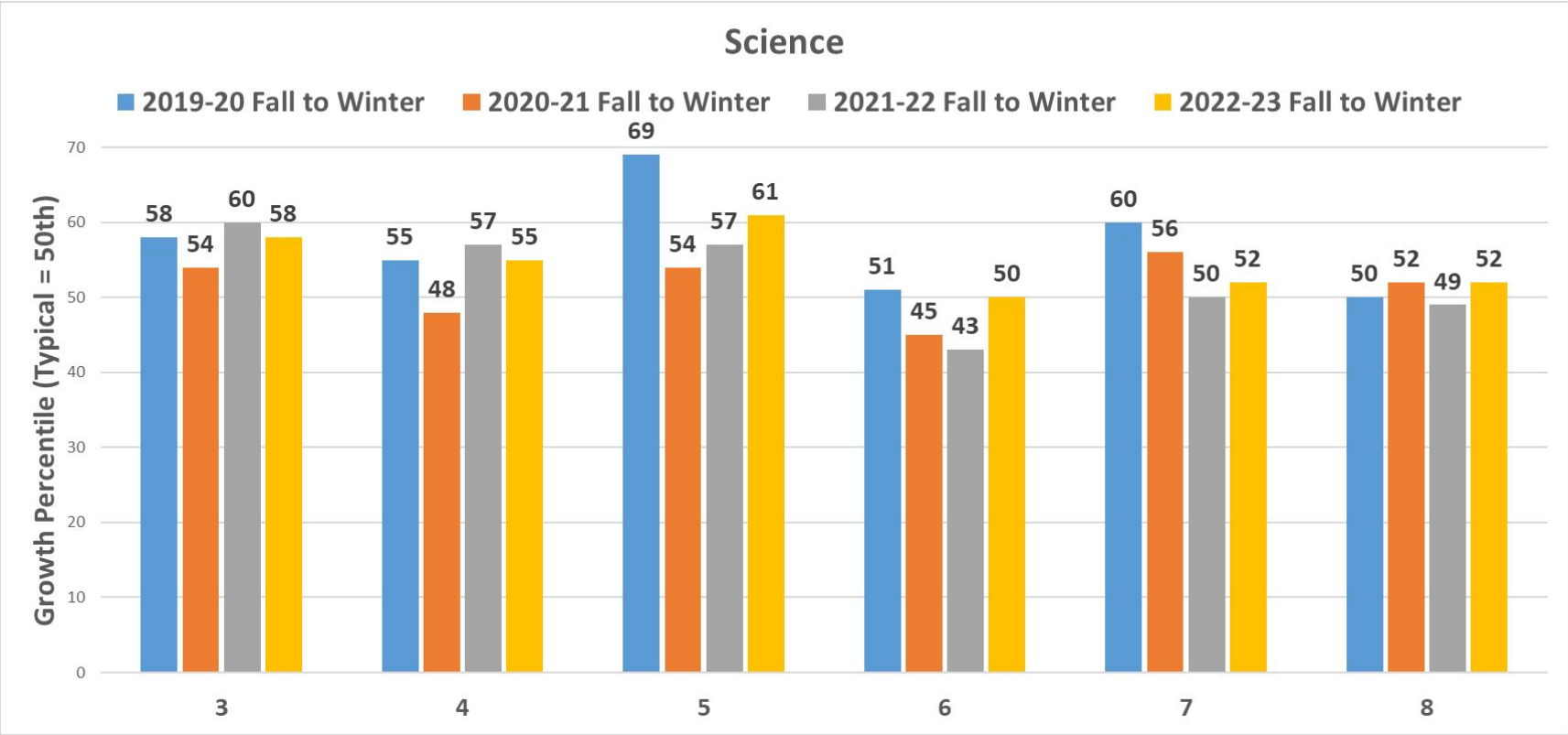
Fall-to-Winter Growth Percentile - Trend



Fall-to-Winter Growth Percentile

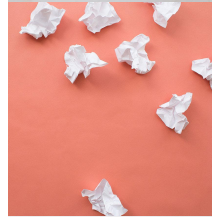


Fall-to-Winter Growth Percentile



District Median Percentile (National Median 50)

Grade	Mathematics	Reading (English and Spanish)	Science
KG	69	62	-
1	59	56	-
2	59	56	-
3	69	69	-
4	70	68	73
5	68	73	68
6	63	65	71
7	61	64	72
8	42 (w/o Algebra)	63	72



Mid-Year MAP Data Review

Questions / Discussion





5. Mid-Year DIP Formative Reviews

Laurie Taylor

Mid Year DIP Formative Review

Strategic Plan Connection to District Improvement Plan

1.1 Empower educators to design learning experiences that meet the individual needs of each student

1.2 Equip educators to continually assess learning using a variety of methods to determine next steps in the learning progression

District Improvement Plan - Student Achievement Performance Objectives

Strategies Addressing Student Performance in All Content Areas and Grade Levels:

1. Facilitate professional learning and provide tools for campus teams (1) to monitor student progress through PLCs to improve student performance and growth; (2) to respond to data to strengthen tier 1 instruction to improve student performance and growth.
2. Equip campus teams to unpack content and process standards and to design and deliver instruction that improves student achievement and growth.



Professional Learning and Support for Teachers / Teams:

- Summer Professional Learning (Teacher Inspire)
- August Back to School C&I Days
- Embedded PL during instructional planning support
- Data analysis with teams to adjust instruction/intervention
- Modeling of high leverage strategies (PISD Instructional Model/Lead4Ward Strategies/GLAD strategies)
- Specially designed PL for campuses
- Additional resources provided to teachers and admin to support these strategies

Thanks!

Any questions?

Please make sure you have signed in.

Next Meeting:

Monday, May 15, 2023

